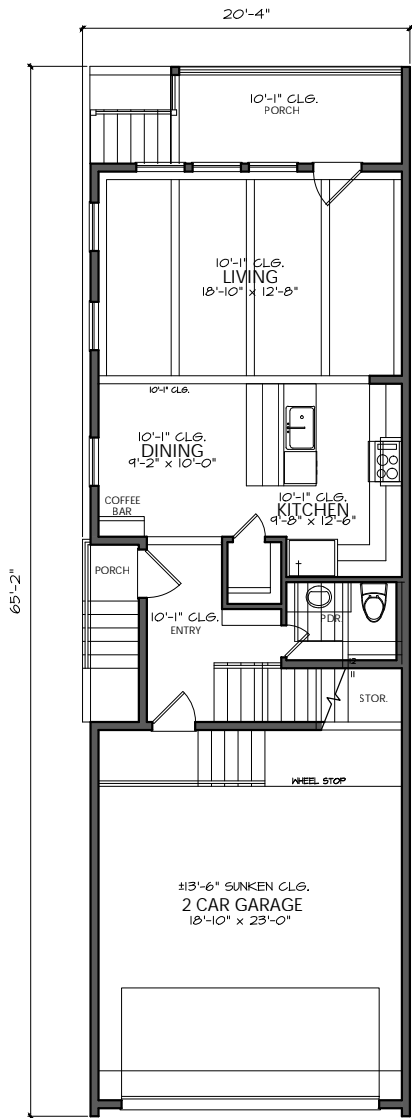
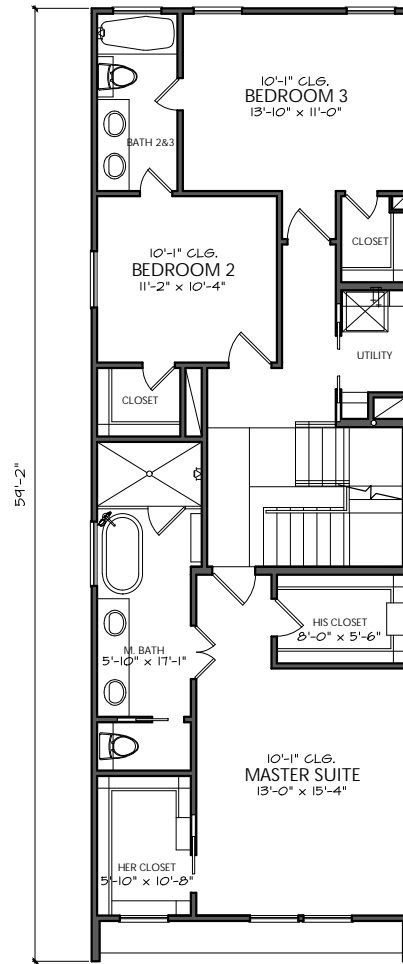




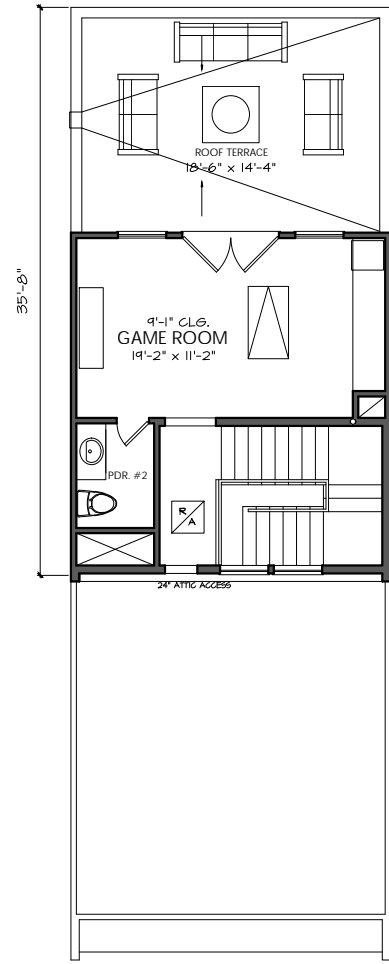
JOB#:	F5119 V13
LEVEL ONE:	660
LEVEL TWO:	1126
LEVEL THREE:	319
TOTAL LIVING:	2105
TOTAL COVERED:	2674
WIDTH:	20'- 4"
DEPTH:	65'- 02"
HEIGHT:	38'- 3 7/16"
1st FLOOR CLG:	10'-0"U.O.N.
2nd FLOOR CLG:	10'-1"U.O.N.
3rd FLOOR CLG:	9'-1"U.O.N.



FIRST FLOOR



SECOND FLOOR



THIRD FLOOR